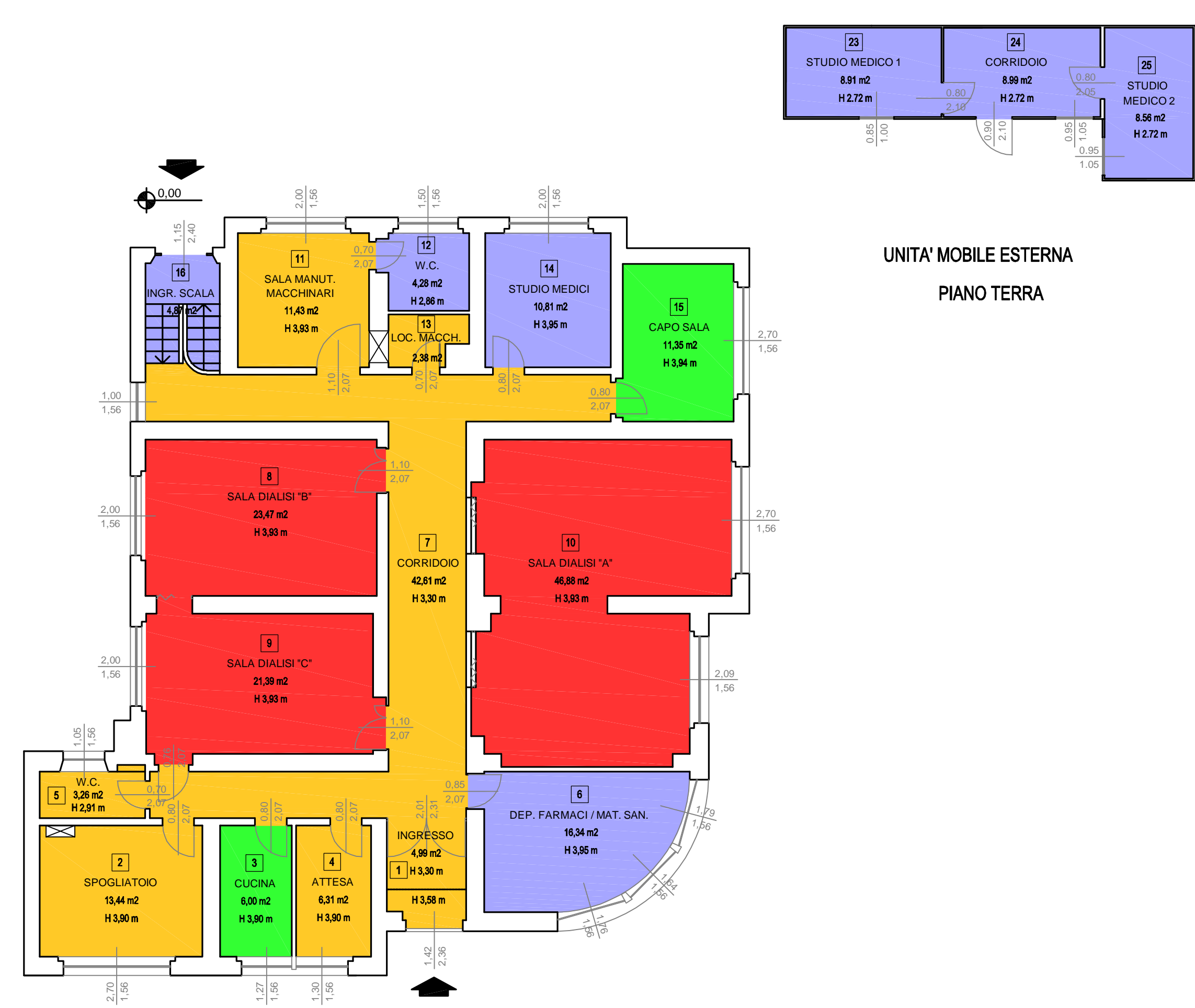
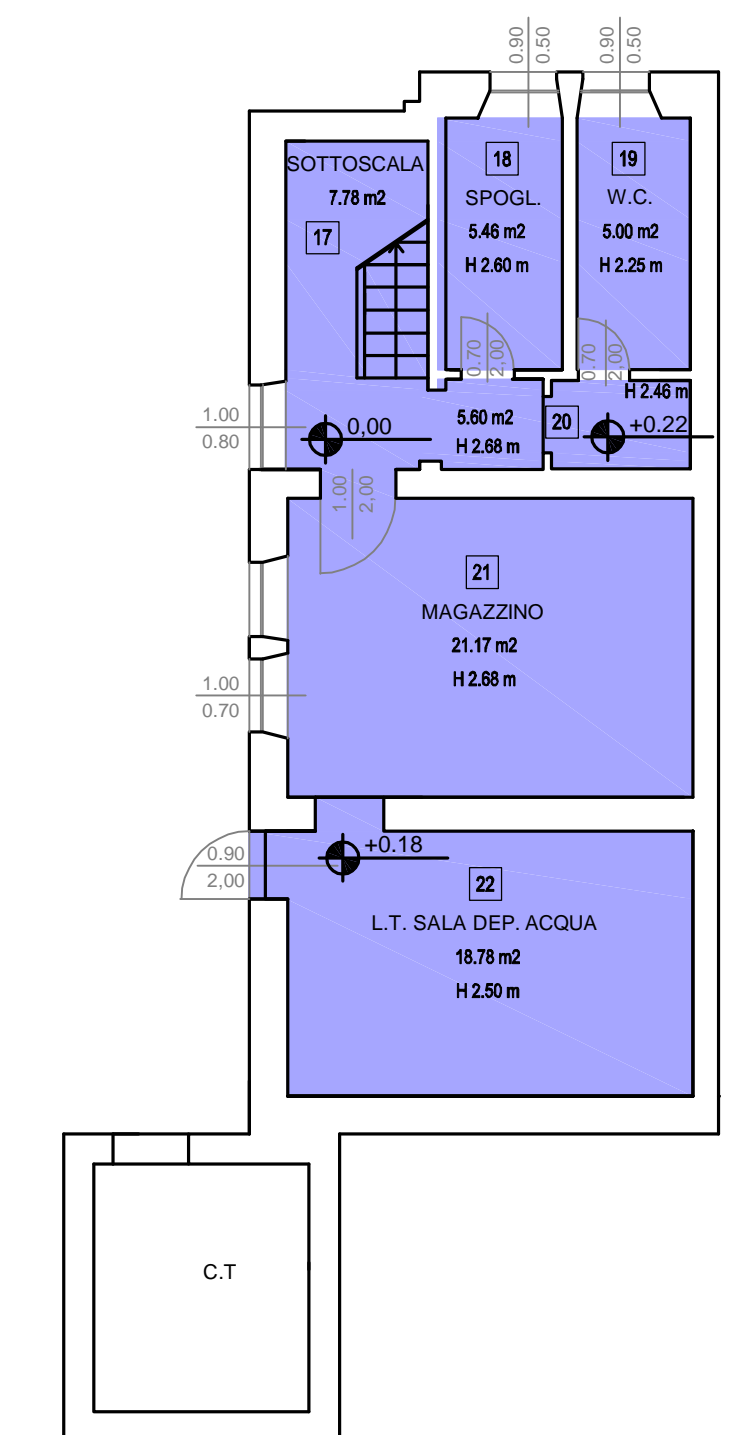


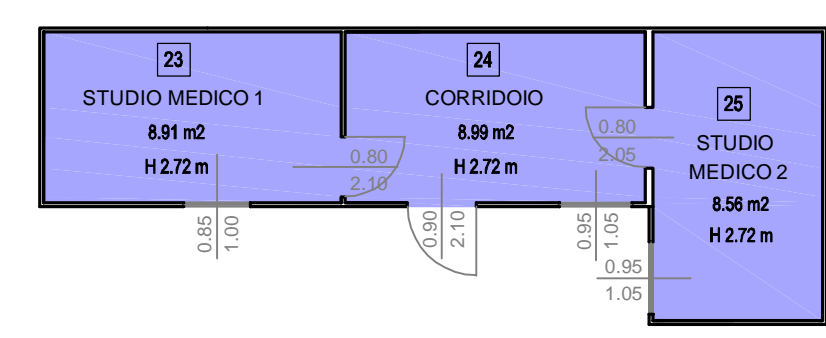
PORTINERIA
P. TERRA
PAD. "A"



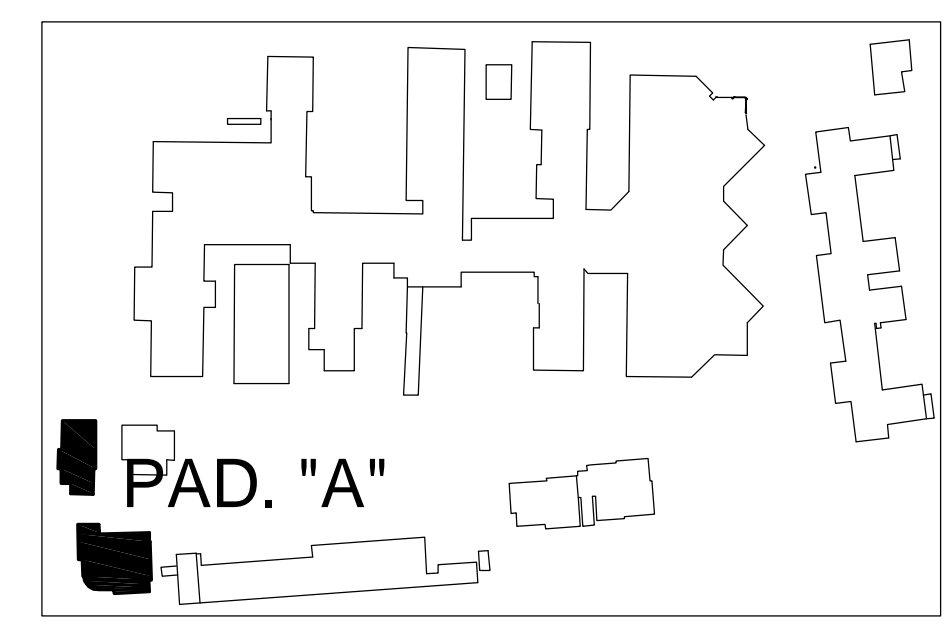
DIALISI
P. SEMINTERRATO - RIALZATO
PAD. "A"



PIANO SEMINTERRATO



UNITA' MOBILE ESTERNA
PIANO TERRA



- BASSO RISCHIO
BASSA FREQUENZA
- BASSO RISCHIO
ALTA FREQUENZA
- MEDIO RISCHIO
- ALTO RISCHIO
- NON OGGETTO D'APPALTO
- ALTO RISCHIO
SALE OPERATORIE
- ALTO RISCHIO
PULITO
- ALTO RISCHIO
SPORCO